

**Mount Manresa's  
Ministry Staff**



**Mr. Fred Herron**

**Fr. Matthew Roche,  
S.J.**



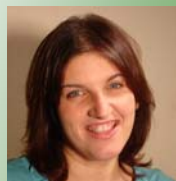
**Sr. Maureen Skelly,  
S.C.**

**Ms. Phyllis  
Petito**



**Bernadette M.  
Reis, FSP**

**Stephanie Licata**



Mount Manresa Jesuit Retreat House  
239 Fingerboard Road ♦ Staten Island, NY 10305

**Registration Form**

***The Church Women Want  
2009-2010***

Name \_\_\_\_\_

Address \_\_\_\_\_

Phone \_\_\_\_\_

E-mail \_\_\_\_\_

**Suggested donation:**

\$5 per session, entire series \$20

Check enclosed

Please call 718.727.3844 ext. 200

If you wish to pay via credit card



Tel: 718-727-3844  
[www.mountmanresa.org](http://www.mountmanresa.org)



**Mount Manresa  
Jesuit Retreat  
House**

***The Church  
Women Want  
2009-2010***



**Mount Manresa  
Jesuit Retreat House  
239 Fingerboard Road  
Staten Island, New York 10305**

**Tel: 718-727-3844  
[www.mountmanresa.org](http://www.mountmanresa.org)**

**The Church Women Want  
2009-2010**



Mount Manresa Jesuit Retreat House is pleased to announce the return of the series "The Church Women Want."

This series of webcasts and conversations, introduced at Mount Manresa in September 2007, was developed in response to a growing recognition of women's desires to participate in shaping the future of our faith and church. It provides a public forum for members of the Mount Manresa Jesuit Retreat House community to learn more about the history of women in the Catholic Church, to share women's stories of the integration of their faith with the fullness of their lives, and to cultivate mentoring relationships among women of faith affiliated with Mount Manresa.

The series makes use of the resources provided by Boston College's



*Church in the 21st Century Center.*

**"Foremothers in Faith—  
Historic Women for Our Time"**

The Catholic Church is more known for its strong tradition of male leadership than it is for its strong female leadership.



This program includes reflections by *Lisa Sowle Cahill* and *M. Shawn Copeland*, professors in the theology department at Boston College, *Dr. Patricia DeLeeuw*, vice provost for faculties, *Colleen Griffith*, faculty director of spirituality studies, and *Ruth Langer*, associate director for the center for Christian-Jewish learning. These speakers represented a diverse field of views from the Christian and Jewish faiths, reflecting on the role of the most prominent women members of the Judaeo-Christian tradition.

*Dr. Patricia DeLeeuw*, vice provost for faculties, *Colleen Griffith*, faculty director of spirituality studies, and *Ruth Langer*, associate director for the center for Christian-Jewish learning. These speakers represented a diverse field of views from the Christian and Jewish faiths, reflecting on the role of the most prominent women members of the Judaeo-Christian tradition.



**Monday, September 28th, 7:30PM**

**"Handing on an Inclusive and Just Faith:  
Parents Reflect"**

Parents and teachers are challenged every day with shaping the lives and imaginations of their children. Nowhere is this challenge faced more keenly than when parents face the challenges presented by a call to inclusivity. *Jane Regan*, an expert in Adult Faith Formation at Boston College, and a panel of parents and teachers, share those challenges and their insights.



**Monday, October 26th, 7:30PM**



**"Called to Be  
Catholic: Religious  
Practices that Nourish  
Women's Spirituality"**

This panel conversation features three Catholic women who share the unique experiences that shape their relationship with Catholicism and the customs they practice today in order to sustain their faith: *Kate Carter*, Boston College graduate, *Sister Mary Sweeney, SC*, Campus Minister; and *Nancy Pineda-Madrid*, assistant professor of the theology department at Boston College.

**Monday, January 25th, 7:30PM**

**"Speaking as a Woman: Reflections  
on Contemporary Catholicism",**

*Colleen M. Griffith*, Faculty Director of Spirituality Studies at Boston College's School of Theology and Ministry, offers one woman's understanding of the challenges and opportunities facing women in the Catholic church today.



**Monday, March 22nd, 7:30PM**



**"Jesus, Prophet of  
Divine Wisdom"**

*Elisabeth Schussler Fiorenza* brings this season of conversations to a close. She was the first woman elected as president of the Society of Biblical Literature.

**Monday, April 26th, 7:30PM**